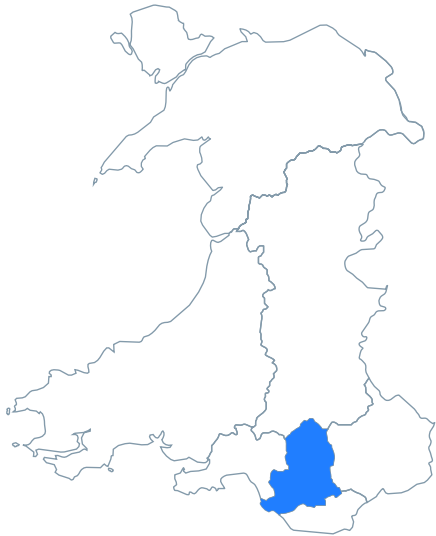


**Cwm Taf Morgannwg  
Regional Partnership  
Board (RPB\*)**  
Cwm Taf Morgannwg  
University Health Board



This RPB\* **does** have a dementia strategy in place.



**1 in 3** people born in the UK today will develop dementia in their lifetime.

There are around **51,000** people living with dementia in Wales.

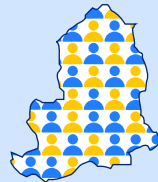
By **2040** this is projected to rise by **37%** to almost **70,000** people.



**Dementia** is the leading cause of death in England and Wales. **563 deaths** were caused by dementia in this area in 2024.



Dementia costs Wales around **£2.3 billion per year**. This will double to **£4.6 billion by 2040**.



There are an estimated **6,552 people** aged 65+ living with dementia in this area.



**1 in 6** hospital beds in the UK is currently occupied by a person with dementia.



The estimated cost of dementia in this area per year is **£290,670,758**.



Just **55.2%** of people with dementia in this health board have a diagnosis.



We are in a pivotal time for dementia, with **over 100 drugs** for dementia currently in clinical trials.



Dementia accounts for **918,000** primary care contacts in Wales per year. By 2040 this will be **1,254,100** contacts.



Dementia is one of the biggest health challenges facing Wales today. But Wales has the opportunity to lead the way. We are calling on the next Welsh Government to commit to publishing a new Dementia Strategy in 2026 which makes real improvements to the lives of people living with dementia.

Contact:  
**Gemma.Roberts@alzheimers.org.uk**

Statistics compiled by Alzheimer's Society, January 2026.

**\*Regional Partnership Board**

A Regional Partnership Board is a statutory body created under the Social Services and Well-being (Wales) Act 2014. It is responsible for leading the integrated planning, commissioning and delivery of health, social care, and preventative services within regional areas that correspond to local health board boundaries.