



## **Information Pack**

**Day Support Worker – (Haslemere and Waverley)  
Six Months Fixed Term Contract**

**October 2009**

Day Support Worker - Job Information Pack

Dear Applicant

**Day Support Worker (Haslemere and Waverley)**

Thank you for your interest in the above position with Alzheimer's Society. Please find enclosed an information pack as requested.

We ask you to fill in your application carefully, giving all relevant information and in particular, setting out the ways in which you meet the competencies outlined in the job description. You should provide clear and concise examples of a time when you have had to use the necessary skills.

The application should be typed or completed in black ink. The panel will be considering the presentation of your application during the selection process.

Your completed application should be returned to us by **12 noon on Thursday 12<sup>th</sup> November 2009**. Late applications will not be accepted.

**Interviews will be held on week commencing 23<sup>rd</sup> November 2009**

**Please send your completed application form to:**

**Elaine Clement – Day Support Manager  
Alzheimer's Society  
Marjorie Gray Hall  
Haslemere  
Surrey  
GU27 2BW  
Or e-mail [haslemerealz@btconnect.com](mailto:haslemerealz@btconnect.com)**

CV's will not be accepted.

Yours faithfully

Elaine Clement

## Day Support Worker - Job Information Pack

### **Alzheimer's Society**

#### **Information for Candidates**

#### **Alzheimer's and Dementia**

Alzheimer's Society is concerned with all forms of dementia, of which Alzheimer's is the most common. Structural and chemical changes in the brain are responsible for the devastating effects of dementia which include deterioration of memory, confusion over time and place, changes in personality and behaviour together with the loss of everyday skills such as driving or telling the time and, as the condition progresses, the ability to wash or dress or even recognise friends.

More than 700,000 people in the UK have some form of dementia - one in 20 of those aged 65 or more and one in five of the over 80s. As the population ages we expect this figure to rise and demand for specific services to grow.

#### **Alzheimer's Society**

Alzheimer's Society is the leading national care and research charity for people with all forms of dementia, their families and carers. We offer support, give information and advice, run day care and home care services, campaign for adequate benefits, proper assessment and high quality care and we fund research into the causes and possible treatments for dementia.

The Society delivers its services through a combination of national and local activity and last year provided help to over 100,000 people.

Alzheimer's Society is made up of approximately 240 local branch operations, varying in size from £10k to £600k pa, supported by a central office based in London. We employ approximately 1,800 staff and benefit from the time and commitment of up to 5,000 volunteers covering a range of duties from direct care to finance. The Society has grown to this size in under 30 years, and is still ambitious. The challenge is to build on its successes, to actively pursue its growth and develop services across the country, whilst at the same time improving governance arrangements and the management of risk.

The Society is undergoing a formal consultation process with some staff in relation to a proposed restructure. The post for which you are applying could potentially be at risk of redundancy should the proposal go ahead.

## Job Description

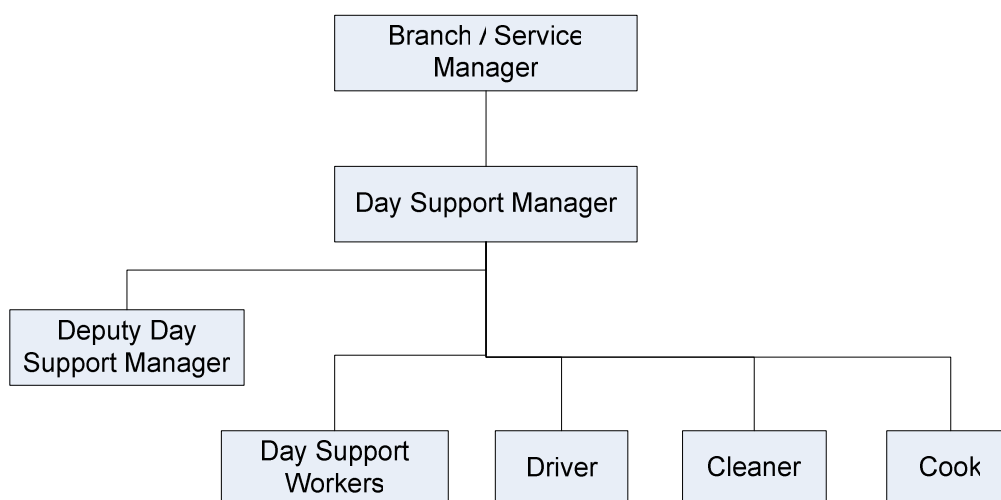
**Job Title:** Day Support Worker (1)

**Job Family:** Day Support

### Main purpose of job:

To assist in all operational aspects of the Day Support service that will be delivered to people with dementia and their carers.

A typical Day Support service structure will look like the chart below:



### Scope of job family:

Day Support is sometimes called 'day services' or 'day care' and involves providing formally arranged support for a group of people with dementia in a safe and secure environment using trained staff (and volunteers). The service may be provided at a particular centre, or may involve activities in the community such as going to the cinema or swimming.

### Dimensions and limits of authority:

There are no staff or budget management responsibilities associated with this post.

### Duties and key responsibilities:

1. To take responsibility for a caseload of clients; contributing to the development of individual care plans; making appropriate risk assessments; working to complete them and helping people with dementia to achieve their potential and maximise their skills.
2. As a key worker for a caseload of clients, to act as the main point of contact for those clients and their carers.

Day Support Worker - Job Information Pack

3. To review and monitor the progress of clients in line with their care plans and report and recommend changes to activities as appropriate.
4. To contribute to the high quality and appropriate care, support and activities are delivered as planned, to the standards required by the Society.
5. To assist with therapeutic activity for clients on a day-to-day basis.
6. To advise and support carers as appropriate, working in partnership with them to assist in good decision making e.g. which kind of activities would be beneficial for the client.
7. To promote and maintain a good standard of care practices within the day centre
8. To assist in the daily preparation up of day centres ensuring the premises are ready to receive clients safely and in comfort.
9. To ensure clients are ready to safely and comfortably use transport provided and act as an escort where necessary.
10. To ensure that assistance with client personal care is provided with dignity and respect.
11. In line with internal and external standards, ensure dietary requirements are understood and any food or beverages are provided appropriately and carefully.
12. Support clients in administering prescribed medication in line with our policies and procedures.

**Additional responsibilities:**

1. To adhere to all the Society's service standards, policies and procedures.
2. To comply with the data protection regulations, ensuring that information on clients remains confidential.
3. To be responsible for personal learning and development and to support the learning and development of others and the whole organisation.
4. To work collaboratively with fundraising and media and campaigns teams, sharing responsibility for the achievement of jointly agreed objectives, as appropriate.
5. To work in a manner that facilitates inclusion, particularly of people with dementia
6. To implement the Society's health and safety policy and procedures, ensuring that all practices and procedures are undertaken in accordance with a healthy and safe working environment and that all staff and volunteers for whom you may be responsible are aware of their responsibilities in respect of their role, monitoring data and recommending action as required.
7. To administrate and organise own work to ensure that it is accurate and meets quality targets, reasonable deadlines and reporting requirements.
8. Follow the Society's management information guidelines and requirements, including ensuring appropriate monthly measures on service usage levels are

Day Support Worker - Job Information Pack

collected and submitted on the services database or other systems in accordance with deadlines.

9. Where appropriate, to recruit, induct and support volunteers
10. To undertake any other tasks, duties or projects which may arise from time to time which are commensurate with the general level of this post and as directed by the designated line manager.

This job description is not exhaustive and serves only to highlight the main requirements of the post holder. The line manager may stipulate other reasonable requirements. The job description will be reviewed regularly and may be subject to change.

## Day Support Worker - Job Information Pack

**Person specification – Day Support Worker**

All of the following requirements are essential, unless marked with a \* when they are desirable, and will be assessed from a combination of information provided from the application form, extended interview process, panel interview and references:

<b>1. Education and qualifications</b>	<b>Application</b>	<b>Interview</b>
NVQ Level 2 in Care or be willing to work towards this qualification	✓	

<b>Skills and experience</b>	<b>Application</b>	<b>Interview</b>
Personal or work experience in a care environment	✓	
An understanding of dementia		✓
An understanding of the needs of people with dementia and their carers*		✓
Good listening skills		✓
Knowledge of relevant legislation including the Health & Safety and the Mental Capacity Act*	✓	
An understanding of the need for client confidentiality		✓
An understanding of collaborative working *		✓

<b>2. Personal attributes / qualities</b>	<b>Application</b>	<b>Interview</b>
Able to travel independently within the service area *	✓	
Empathy		✓
Non judgemental communication		✓
Commitment to and understanding of equal opportunities		✓
Understanding of the inclusion agenda and its relevance within a diverse society		✓

## Day Support Worker - Job Information Pack

### Job Application Guidelines

Alzheimer's Society aims to be an equal opportunities employer. We aim to treat every applicant fairly. The information you provide in your application form is the only information we will use in deciding whether or not you will be invited for interview, so it is important that you complete it with care. To help you, please follow these guidelines.

1. Please complete all sections of the form.
2. Please complete the application form in black ink, as it will be photocopied. Do not stick or glue paper to the back of the form – it gets caught in the photocopier. Please add a separate piece of paper instead.
3. After reading the person specification and job description, think carefully about your application and consider to what extent you have the skills and experience necessary to meet the requirements of the post.
4. Your last and present post allows you the opportunity to tell us about the work you are doing or have done in the past. Be as brief as you can, and use the personal statement at the back of the form to describe in more depth your skills, knowledge and experience relevant to the job.
5. Under the section 'Education, qualifications and training' you are asked to state your qualifications or name a course that you attended. We do not need a full account of your education since your junior school days. It is sufficient to state that you have a specific number of 'A' levels and GCSEs unless you are asked for a specific qualification on the person specification, such as GCSE English. You should mention qualifications or training relevant to the post you are applying for.
6. The personal statement is an important part of the application form and should be used to tell us how you meet the person specification. Always remember to specify your responsibilities rather than those of your section or department. Remember to explain how your current or previous experiences relate to the job you are applying for.
7. Please ensure that your completed application form is returned by **12pm** on the closing date stated on the advertisement. Do not attach any other documentation apart from the equal opportunity monitoring form. Any attachments, such as CVs, references or photocopies of your qualifications, will be disregarded and will not be seen by the selection panel.
8. In order to make good use of the charity's money, your application will not be acknowledged unless you enclose a stamped addressed postcard or similar, nor will you hear from us unless you are selected to attend for interview.

## Day Support Worker - Job Information Pack

### Information for Candidates

#### Terms and Conditions of Employment

Outlined below are some of the main terms and conditions of employment relevant to all employees of the Society.

##### 1. Probation

All posts are subject to a probationary period of 12 weeks unless otherwise stated on the letter of appointment. During this probationary period, either party may give the other one-week's notice in writing to terminate the employment. After successful completion of the probationary period, the notice stated on your contract of employment will apply.

##### 2. Annual Leave

The holiday year runs from 1 April to 31 March. In each holiday year, in addition to bank and statutory holidays, the holiday entitlement in the first full year will be 25 days, scaled down according to start date. This then increases in line with service as follows: During the first full leave year and up to 2 leave years 25 days, third leave year 26 days, fourth leave year 27 days, fifth leave year 30 days. Holiday will be calculated on a pro-rata basis for part-time workers.

##### 3. Pension Scheme

The Society currently operates a Group Personal pension scheme. All employees under the age of 75, may join the scheme on completion of the probationary period. Employees may contribute a percentage of their salary to the scheme, and the Society will double the employee's contribution up to 8% of the employees' gross salary. This will mean that a 1% employee contribution will attain a 2% contribution from the Society and a 4% contribution will attain the maximum 8% from the Society. Alzheimer's Society will not pay into a personal pension scheme. .

##### 4. Salary Payment

All new employees are placed on a grade based on the Society's salary scheme, which is normally reviewed in April of each year.

The commencing salary is as stated in the letter of appointment. Salaries are paid in arrears on the 25th of each calendar month, by direct credit transfer into a bank or building society account. (If the 25th falls at a weekend, payment is made on the working day immediately prior to the 25<sup>th</sup>)

##### 5. Sick Leave

The Society operates an occupational sick pay scheme that is based on length of service with the Society.

Day Support Worker - Job Information Pack

**6. Retirement Age**

The Society's normal retirement age is 65. However, staff may be employed who are over the age of 65.

Any applicant aged 65 and over who is successful in obtaining a position with the Society should be aware that as a result of the Employment Equality (Age) Regulations 2006 they will now have the statutory right to claim unfair dismissal. They will now also be entitled to a statutory redundancy payment if they are made redundant. In addition, they also have the right to claim statutory sick pay for up to 28 weeks if they are absent to work due to sickness.

**7. No Smoking**

The Society operates a no smoking policy.

**8. CRB**

This post is subject to a satisfactory disclosure from the Criminal Records Bureau.